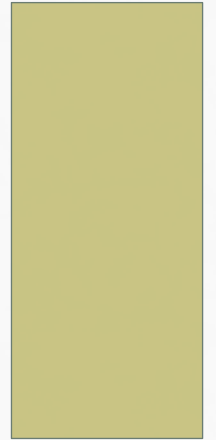


# APPLYING TO GRADUATE SCHOOL AND TAKING THE GRE

PPT AT  
[GOSHEN.EDU/CAREERSERV/GRADUATE-SCHOOL](http://GOSHEN.EDU/CAREERSERV/GRADUATE-SCHOOL)



# REFLECT

1. Why are you interested in graduate school? What are your goals? What kind of program are you considering?
2. Who on or off campus would be a good person to talk to about your field of interest?
3. What is the job market currently like in your field of interest? Where can you find more information about this?
4. Describe your dream graduate school/program: Would you like to pursue a graduate degree on a full-time or part-time basis? In what part of the country would you like to live? In what kind of city or town? What is your ideal community like?
5. List some questions you have about graduate school

# SEARCHING FOR A GRADUATE PROGRAM

- 1. Ask experts: faculty and professionals in your field
- 2. Make a list of potential programs and compare:
  - Reputation
  - Research and scholarly opportunities
  - Job placement rates and information
  - Financial aid
  - Location and cost of living
- 3. Visit schools if you can

# AN APPLICATION TIMELINE:

## Now:

- Talk to GC professors and professionals in your field
- Target specific programs and find application deadlines.
- Investigate when and where to take the GRE (<http://www.ets.org/>)

## 3 months/1 semester before published deadlines:

- Take GRE and/or other standardized tests
- Ask for letters of recommendation.
- Prepare application materials (forms, personal statement, transcripts).

# HOW WILL ADMISSIONS COMMITTEES EVALUATE MY APPLICATION?

- Personal statement
- Letters of recommendation
- Standardized test scores (GRE, TOEFL, LSAT, MCAT, etc.)
- GPA
- Transcripts & resume
- Scholarly and research experience
- Work and life experience

# PREPARING A PERSONAL STATEMENT

- What are your specific goals?
- How have you been prepared?
- Use striking details about your experiences
- Demonstrate your knowledge of the field and institution
- Convey confidence
- Write several drafts and get feedback from others

# THE GRE

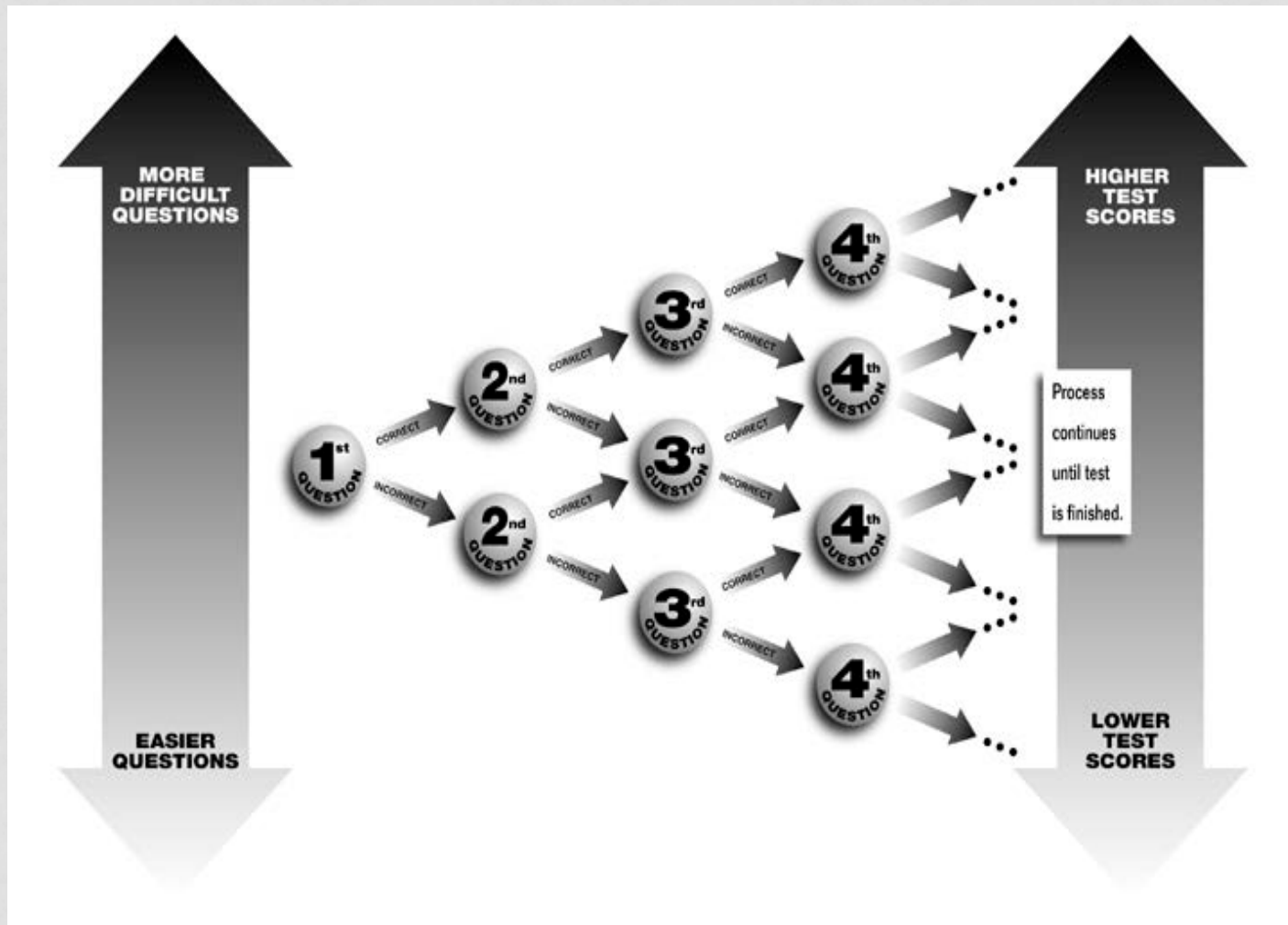
- The GRE General Test measures:
  - Verbal reasoning
  - Quantitative reasoning
  - Analytical writing
- The General Test costs \$185 and is offered year-round at computer-based test centers. The nearest center to GC is in Mishawaka at the Prometric Test Center (574-254-1055). <https://www.prometric.com/>
- You have an array of choices about which test results are sent to which schools; on test day, you may designate four programs to receive scores; additional score reports will incur extra fees.

# GRE SUBJECT TESTS

- Biochemistry, Cell and Molecular Biology
- Biology
- Chemistry
- Computer Science
- Literature in English
- Mathematics
- Physics
- Psychology



# THE GRE GENERAL TEST IS ADAPTIVE



# YOU CAN STUDY FOR THE GRE

- For more information, go to the ETS website:  
<http://www.ets.org/>
- Use practice software
- Consult test preparation guides
- More info on grad school at  
[goshen.edu/careerserv/graduate-school/](http://goshen.edu/careerserv/graduate-school/)