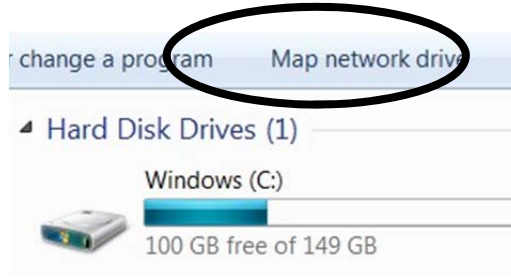


Personal Web Server Storage Space

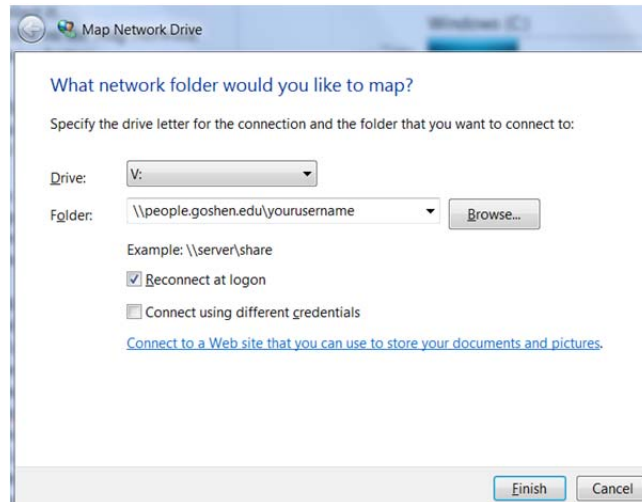
Every Goshen College student has personal web page storage space on our campus web server. You can use this space to build a personal web page with biographical information about yourself. Each student receives 250 MB of space on the web server.

Mapping to the Web Server on a Windows Computer

- Double click on the “Computer” icon on your desktop.
- Once the window opens, click on Computer to select it.
- Click on the Map Network Drive button.



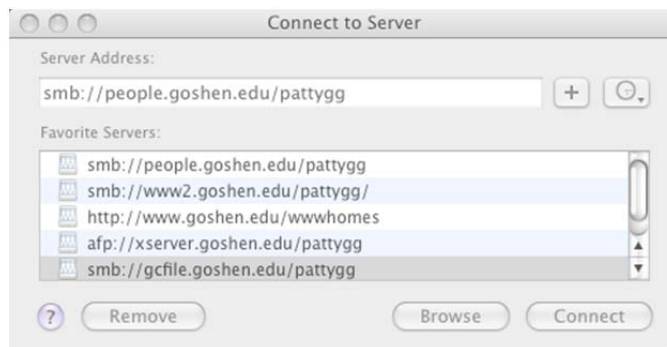
- Choose a drive letter from the drive drop-down list, such as “V”.
- In the Folder field, type in **\\people.goshen.edu\yourusername** (where yourusername is replaced it with your GC username)
- Make sure the Reconnect at Login box is selected, and then click on Finish.



You can now create web pages in your personal space on the web server. All pages will need to be stored in the “mypages” folder. The index.html file is the main page for your website. All computer lab computers come with Adobe Dreamweaver, which you can use to create and edit your web pages.

Mapping to the Web Server from a Computer Running Mac OS

- From the Finder, click on the GO menu and select Connect to Server
- In the Server Address field, type in **smb://people.goshen.edu/yourusername** (where yourusername is replaced it with your GC username)
- Click on the + sign to add this address to your *favorite servers* list
- Click on the Connect button



You can now create web pages in your personal space on the web server. All pages will need to be stored in the “mypages” folder. The index.html file is the main page for your website. All computer lab computers come with Adobe Dreamweaver, which you can use to create and edit your web pages.